

Kaiser Permanente San Diego County

2023 Community Health Snapshot

Our mission goes beyond providing exceptional health care services. We are committed to enhancing the well-being of our members and strengthening the communities we serve.

We believe that true health extends beyond medical care, encompassing physical, mental, social, and community aspects. Kaiser Permanente is tackling the underlying determinants of health, including economic opportunities, racial equity, education, homelessness, housing, food security, and building resilience in school environments, while ensuring access to health care.

To guide our investments toward achieving more equitable health outcomes in a meaningful and sustainable manner, we collaborate closely with community-based organizations, safety net clinics, schools, faith-based institutions, cities, service providers, county departments, and health care systems.

In addition to direct grant investments, we provide our partners with technical assistance, facilitate trainings, conduct community programming, provide volunteers, and engage in strategic community collaboratives. Together, we co-create solutions tailored to the specific needs of our communities.



Building healthy communities

Kaiser Permanente is committed to Total Health — mind, body, and community.

Our footprint in San Diego County

3 Medical centers (hospitals)

21 Medical office buildings

628,340 Members

1,582 Physicians

4,548 Nurses

7,327 Employees

In 2023, **\$70,768,084** was invested to improve community health among vulnerable populations. Strategic community investments are guided by the Kaiser Permanente tri-annual Community Health Needs Assessment (kp.org/CHNA).

Population by age and race

- **4,376,580** total population
- **14.2%** age 65+ years; **21.5%** under age 18 years
- **0.4%** Native Hawaiian/other Pacific Islander, **5.2%** multiracial, **12.5%** Asian, **4.4%** Black, **42.5%** White, **34%** Hispanic

Why it matters

- Latino/a earn **\$29,500** less than their white counterparts.
- **60%** of Latino/a and Black residents experience high rent cost burden.
- **10%** of residents experience food insecurity.
- Only **33%** of eligible residents are enrolled in Medicaid or public insurance.
- **27%** of older adults struggle with mental health.
- Rates of suicide are highest for non-Hispanic White **18.4%** and non-Hispanic Black **11.9%** individuals.



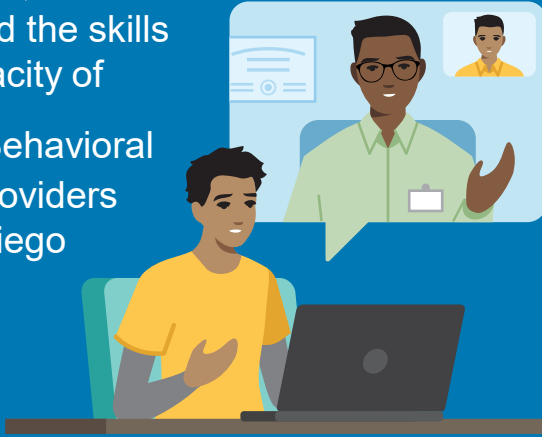
Creating economic opportunity

The **San Diego Workforce Partnership (SDWP)**, **Interfaith Community Services (ICS)**, and Kaiser Permanente San Diego are dedicated to accelerating career growth and bolstering the behavioral health workforce. Individuals with a broad spectrum of experiences, skills, cultural backgrounds, and linguistic proficiencies address the multifaceted needs in our communities. Kaiser Permanente San Diego contributed a **\$120,000** grant fund to SDWP to enable the training of **26** existing ICS staff members to specialize as substance use disorder counselors, peer support specialists, or obtain master's degrees in social work.

\$269,960

to expand the skills and capacity of

123 Behavioral health providers in San Diego County



\$190,000

to address food insecurity



Quality health care delivered to

71,843

Medi-Cal patients



\$592,000

to support the Safety Net in improving quality and expanding capacity



\$20,613,796

in medical financial assistance provided to

15,183

individuals



Read more about our partnerships

The **Hippocrates Circle Program** seeks to inspire diverse and underrepresented middle school students to pursue careers in medicine or health care. The program partners with schools across Southern California to deliver a series of engaging educational events for students, families, and their communities. Students have an opportunity to connect and learn from physicians that may reflect their own personal experience and diverse background. In 2023, **79** students in San Diego County completed the program.

In collaboration with **211 San Diego**, a Kaiser Permanente grant of \$70,000 facilitated the enrollment of eligible residents into the federal Supplemental Nutrition Assistance Program by supporting the implementation of the Countywide CalFresh Enrollment Calendar (CCEC) and the onboarding of CalFresh enrollment providers. The CCEC identifies optimal appointment times and locations for clients seeking application assistance. Simultaneously, providers assess clients' immediate food needs and connect them with emergency food resources. The calendar streamlines access to CalFresh benefits, alleviating the burden on San Diegans facing food insecurity.

The Legal Aid Society of San Diego (LAS) stands as a cornerstone nonprofit law firm, dedicated to empowering clients to navigate social and governmental systems effectively. To ensure the long-term health and stability of our aging population, Kaiser Permanente has extended support to LAS' Transitions of Care Advocacy Project. Through this initiative, LAS staff actively engage and support older adults and individuals with disabilities, facilitating access to integrated care models and advocating for long-term support. LAS' educational and advocacy services have had a transformative impact, enabling countless older adults and individuals with disabilities to thrive within their communities.